

# SHELL.3



IP66	IK09	CREE XP-G	RECYCLE
FAILURE RATE < 0,1% after 25,000h	LIFE TIME Tested over 50,000h	MIN -20°C MAX 55°C	CLASE I
SP US	RoHS	CE	RoHS 2

CIRCULAR PROJECTORS  
**SHELL SERIES**

## References

Code	Type	Finish	Light Color	Power	Lense		Voltage	Driver	
VL-SH3	A Base	LG Light grey	<b>White</b>						
	B Base 2	DK Dark grey	W24 2400K	10W	1,5° (10W)	2,5°	UNIV 100-264Vac	STD ON/OFF	
	C Pole Arm	WH White	W27 2700K	12W	6°	12°	24 24Vdc	010 0-10V	
	D Pole mounted	BK Black	W30 3000K	15W	20°	30°		DALI	
	E Stripe mounted	RAL Any RAL color	W40 4000K	30W	40°	60°		CAS Casambi	
	F Nut		W60 6000K			5x20°	10x70°		
	<b>Single Color (SC)</b>								
	R Red			12W	6°	12°	UNIV 100-264Vac	STD ON/OFF	
	B Blue			15W	20°	30°	24 24Vdc	010 0-10V	
	G Green			30W	40°	60°		DALI	
	A Amber				5x20°	10x70°		CAS Casambi	
	<b>RGBW</b>								
RGBW3			12W	15°	20°	24 24Vdc	DALI		
4 in 1 Chip				30°	60°		DMX		
RGB+W3000K				15x60°			CAS Casambi		
RGBW4									
4 in 1 Chip									
RGB+W4000K									

Reference example

VL-SH3-A-WH-W24-10W-1,5°-UNIV-STD

## Variations



**A**  
Base



**B**  
Base 2



**C**  
Pole Arm  
D=45mm



**D**  
Pole mounted  
D67-325mm

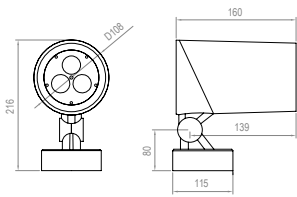


**E**  
Stripe mounted

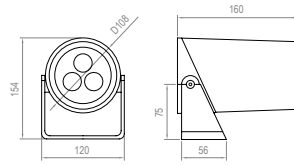


**F**  
Nut (M10x1,5mm)

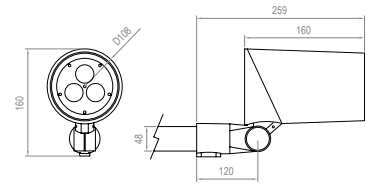
# Dimensions



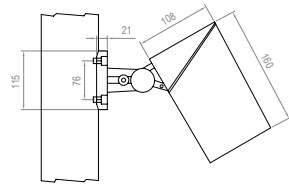
**TYPE A**



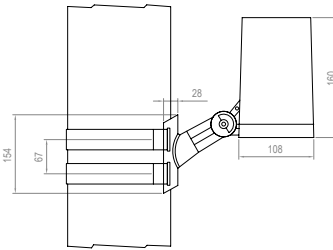
**TYPE B**



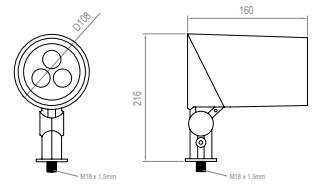
**TYPE C**



**TYPE D**



**TYPE E**



**TYPE F**

# Accessories

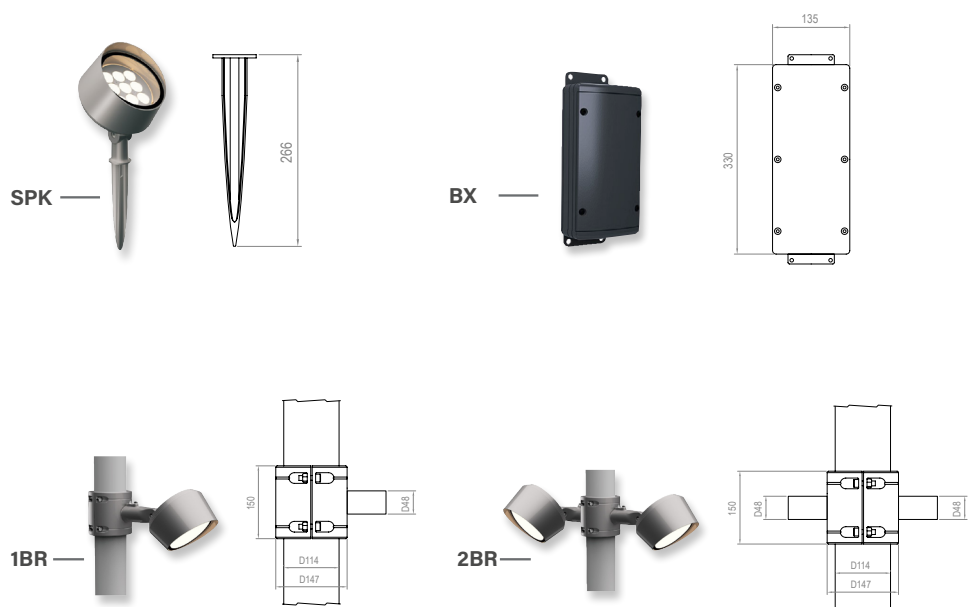
Code	Accessories
------	-------------

**VL-SH3**  
**HC** Honeycomb Grid  
**MSH** Mesh  
**HO** Hood  
**VS** Visor



Code	Accessories
------	-------------

**VL-SH3**  
**\*SPK** SPIKE  
**\*1BR** Bracket for 1 projector  
**\*2BR** Bracket for 2 projector  
**\*BX** Elevated Box  
**\*CBLX** Special length cable  
*\* Must be used with Type F*  
*\* Must be used with Type C*  
*\* Must be used with Type C*  
*\* Must be used with Type F*  
*\* Instead of X, put length of cable needed*  
*Example: VL-SH3-CBL-10m*



# Accessories

Code	Description	Diameter	N° of projectors
VL-SH3	RNG RING	50 50cm	2P 2 projectors
		60 60cm	3P 3 projectors
		70 70cm	4P 4 projectors
		80 80cm	6P 6 projectors
			8P 8 projectors
		<i>Suggested diameter = diameter of tree trunk + 10cm/15cm</i>	<i>* projectors references must be order separately</i>
			<i>** For 24Vdc projectors, ring can allocate 1 power supply for all projectors</i>
			<i>*** Must be used with Type F</i>

