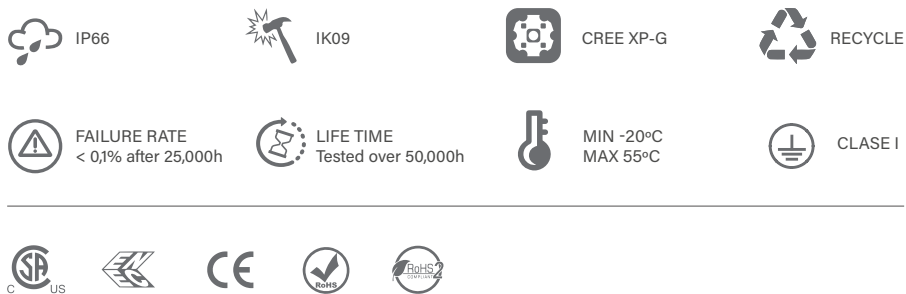


SHELL.5

iotaLAMP

www.iotalamp.com



CIRCULAR PROJECTORS
SHELL SERIES

References

Code	Type	Finish	Light Color	Power	Lense		Voltage	Driver	
VL-SH5	A Base	LG Light grey	White						
	B Base 2	DK Dark grey	W24 2400K	45W	2,5° (45W)	6°	UNIV 100-264Vac	STD ON/OFF	
	C Pole Arm	WH White	W27 2700K	50W	12°	20°	24 24Vdc	010 0-10V	
	D Pole mounted	BK Black	W30 3000K	60°	30°	40°		DALI	
	E Stripe mounted	RAL Any RAL color	W40 4000K		60°	5x20°		CAS Casambi	
	F Nut			W60 6000K		10x70°			
				Single Color (SC)					
				R Red	45W	6°	12°	UNIV 100-264Vac	STD ON/OFF
				B Blue	50W	20°	30°	24 24Vdc	010 0-10V
				G Green		40°	60°		DALI
				A Amber		5x20°	10x70°		CAS Casambi
				RGBW					
				RGBW3	50W	15°	20°	UNIV 100-264Vac	DALI
				4 in 1 Chip		30°	60°	24 24Vdc	DMX
			RGB+W3000K		15x60°		CAS Casambi		
			RGBW4						
			4 in 1 Chip						
			RGB+W4000K						

Reference example

VL-SH5-A-DK-W30-45W-2,5°-UNIV-DALI

Variations



A
Base



B
Base 2



C
Pole Arm
D=45mm



D
Pole mounted
D67-325mm

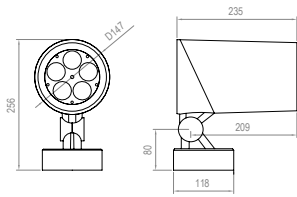


E
Stripe mounted

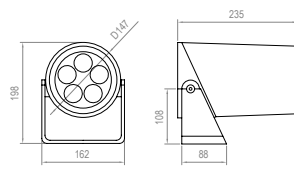


F
Nut (M10x1,5mm)

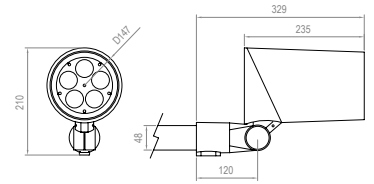
Dimensions



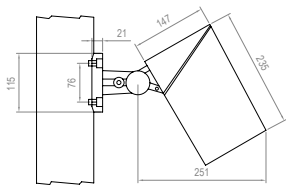
TYPE A



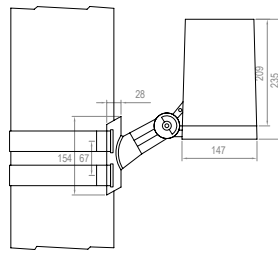
TYPE B



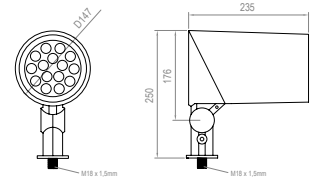
TYPE C



TYPE D



TYPE E



TYPE F

Accessories

Code	Accessories
VL-SH5	HC Honeycomb Grid MSH Mesh HO Hood VS Visor

Code	Accessories
VL-SH5	*SPK SPIKE *1BR Bracket for 1 projector *2BR Bracket for 2 projector *BX Elevated Box *CBLX Special length cable

** Must be used with Type F
* Must be used with Type C
* Must be used with Type C
* Must be used with Type F
* Instead of X, put length of cable needed
Example: VL-SH5-CBL-10m*

