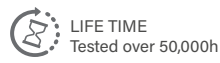
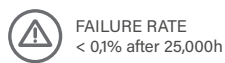


SHELL.0

iotaLAMP

www.iotalamp.com



CIRCULAR PROJECTORS
SHELL SERIES

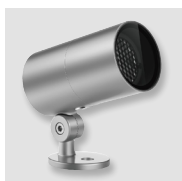
References

Code	Type	Finish	Light Color	Power	Lense		Voltage	Driver
VL-SH0	A Base F Nut	LG Light grey DK Dark grey WH White BK Black RAL Any RAL color	White					
			W24 2400K	10W	2,5°	6°	UNIV 100-264Vac	STD ON/OFF
			W27 2700K		12°	20°		
			W30 3000K		30°	40°		
			W40 4000K		60°	5x20°		
			W60 6000K		10x70°			
			Single Color (SC)					
			R Red	10W	6°	12°	UNIV 100-264Vac	STD ON/OFF
			B Blue		20°	30°		
			G Green		40°	60°		
			A Amber		5x20°	10x70°		
			RGBW					
			RGBW3	10W	15°	20°	12 12Vdc	RD Remote DALI
			4 in 1 Chip		30°	60°		
			RGB+W3000K		10x30°	10x60°		
RGBW4	10W	15°	20°	12 12Vdc	RD Remote DALI			
4 in 1 Chip		30°	60°					
RGB+W4000K		10x30°	10x60°		DMX			
					RCAS Casambi			

Reference example

VL-SH0-A-WH-W24-10W-60°-UNIV-CAS

Variations

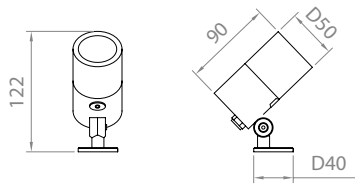


A
Base

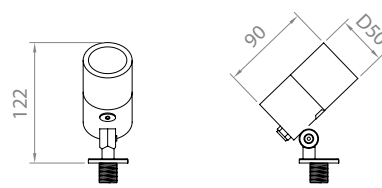


F
Nut (M10x1,5mm)

Dimensions



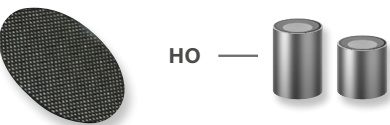
TYPE A



TYPE F

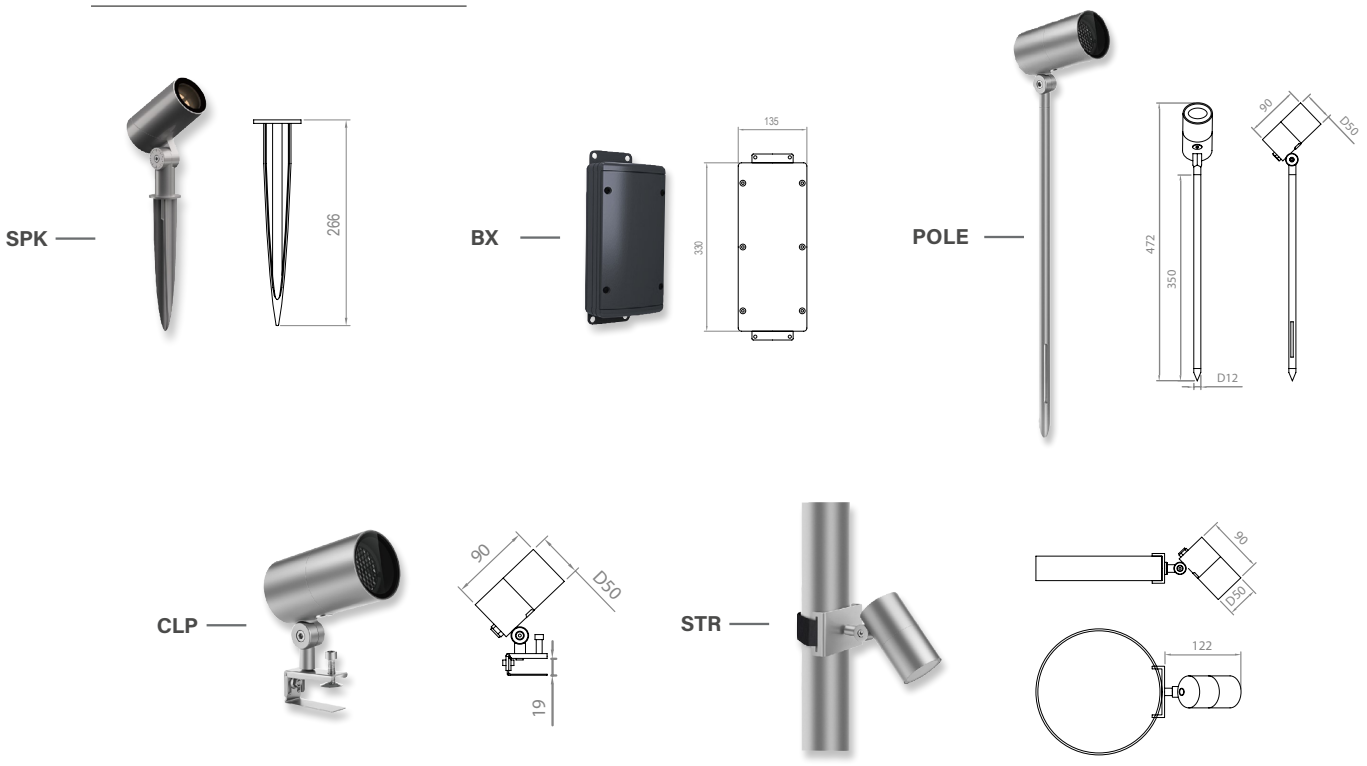
Accessories

Code	Accessories
VL-SH0	HC Honeycomb Grid HO Hood 75 mm



Code	Accessories
VL-SH0	*SPK SPIKE *BX Elevated Box *POLE POLE *CLP CLAMP *STR STRIPE *CBLX Special length cable

** Must be used with Type F*
** Must be used with Type F*
** Must be used with Type F*
** Must be used with Type F*
** Must be used with Type F*
** Must be used with Type F*
** Instead of X, put length of cable needed*
Example: VL-SH0-CBL-10m



Accessories

Code	Description	Diameter	N° of projectors
VL-SH0	RNG RING	50 50cm	2P 2 projectors
		60 60cm	3P 3 projectors
		70 70cm	4P 4 projectors
		80 80cm	6P 6 projectors
	<i>Suggested diameter = diameter of tree trunk + 10cm/15cm</i>		<i>* projectors references must be order separately</i>
			<i>** For 24Vdc projectors, ring can allocate 1 power supply for all projectors</i>
			<i>*** Must be used with Type F</i>

