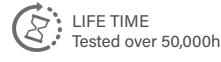
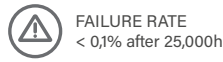


FOX.9

iotaLAMP

www.iotalamp.com



CIRCULAR PROJECTORS
FOX SERIES

References

Code	Type	Finish	Light Color	Power	Lense		Voltage	Driver	
VL-F9	A Base	LG Light grey	White						
	B Base 2	DK Dark grey	W24 2400K	30W	1,5° (30W)	2,5°	UNIV 100-264Vac	STD ON/OFF	
	C Pole Arm	WH White	W27 2700K	35W	6°	12°		010 0-10V	
	D Pole mounted	BK Black	W30 3000K	45W	20°	30°	24 24Vdc	DALI	
	E Stripe mounted	RAL Any RAL color	W40 4000K		40°	60°			
	F Nut		W60 6000K		5x20°	10x70°		CAS Casambi	
	Single Color (SC)								
	R Red		35W	2,5°	6°	UNIV 100-264Vac		STD ON/OFF	
	B Blue		45W	12°	20°	24 24Vdc		010 0-10V	
	G Green			30°	40°			DALI	
	A Amber			60°	5x20°			CAS Casambi	
				10x70°	10x70°				
	RGBW								
RGBW3		60W	15°	20°	UNIV 100-264Vac		DALI		
4 in 1 Chip			30°	60°	36 36Vdc		DMX		
RGB+W3000K			15x60°				CAS Casambi		
RGBW4									
4 in 1 Chip									
RGB+W4000K									
RGBW7									
7 in 1 Chip									
RGBWCLA									

Reference example

VL-F9-A-DK-W30-45W-2,5°-UNIV-DALI

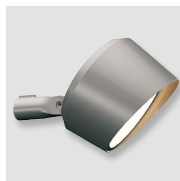
Variations



A
Base



B
Base 2



C
Pole Arm
D=45mm



D
Pole mounted
D67-325mm

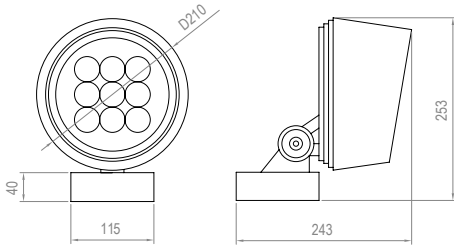


E
Stripe mounted

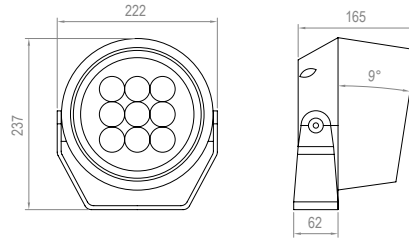


F
Nut (M10x1,5mm)

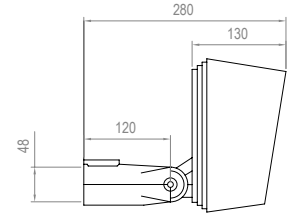
Dimensions



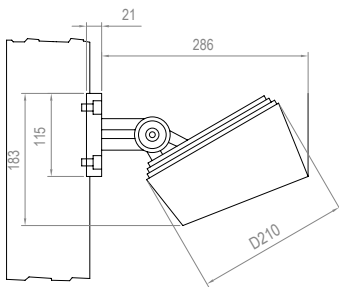
TYPE A



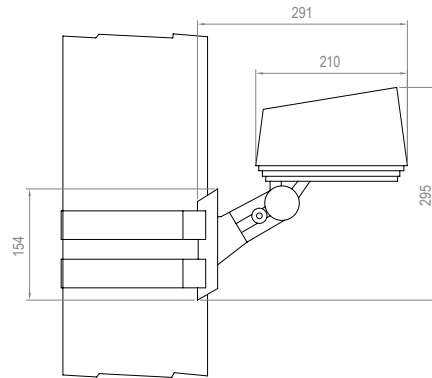
TYPE B



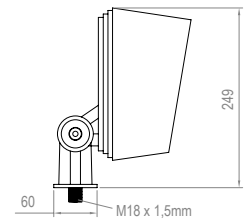
TYPE C



TYPE D



TYPE E

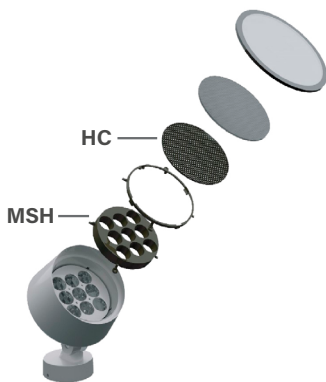


TYPE F

Accessories

Code	Accessories
------	-------------

VL-F9 HC Honeycomb Grid
MSH Mesh

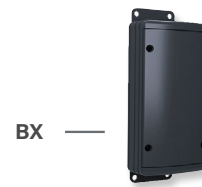
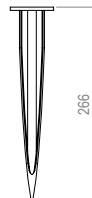


Code	Accessories
------	-------------

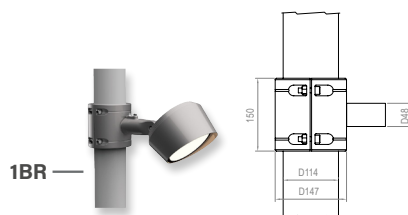
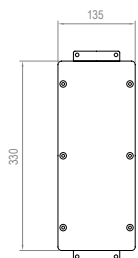
VL-F9 *SPK SPIKE
*1BR Bracket for 1 projector
*2BR Bracket for 2 projector
*BX Elevated Box
*CBLX Special length cable
** Must be used with Type F*
** Must be used with Type C*
** Must be used with Type F*
** Instead of X, put length of cable needed*
Example: VL-F9-CBL-10m



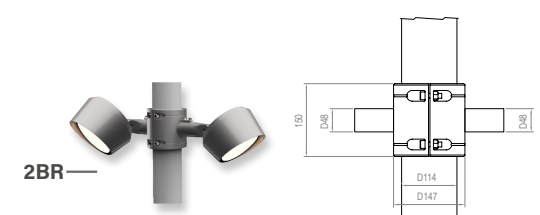
SPK



BX



1BR



2BR