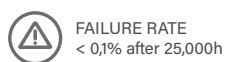


FOX.16

iotaLAMP

www.iotalamp.com



CIRCULAR PROJECTORS
FOX SERIES

References

| Code | Type | Finish | Light Color | Power | Lense | | Voltage | Driver | |
|--------|------------------|-------------------|--------------|--------------------------|------------|-------|-----------------|-----------------|------------|
| VL-F16 | A Base | LG Light grey | White | | | | | | |
| | B Base 2 | DK Dark grey | W24 2400K | 40W | 1,5° (40W) | 2,5° | UNIV 100-264Vac | STD ON/OFF | |
| | C Pole Arm | WH White | W27 2700K | 60W | 6° | 12° | | 010 0-10V | |
| | D Pole mounted | BK Black | W30 3000K | 75W | 20° | 30° | 24 24Vdc | DALI | |
| | E Stripe mounted | RAL Any RAL color | W40 4000K | | 40° | 60° | | CAS Casambi | |
| | | | | W60 6000K | | 5x20° | 10x70° | | |
| | | | | Single Color (SC) | | | | | |
| | | | | R Red | 60W | 2,5° | 6° | UNIV 100-264Vac | STD ON/OFF |
| | | | | B Blue | 75W | 12° | 20° | 24 24Vdc | 010 0-10V |
| | | | | G Green | | 30° | 40° | | DALI |
| | | | A Amber | | 60° | 5x20° | CAS Casambi | | |
| | | | RGBW | | | | | | |
| | | | RGBW3 | 100W | 15° | 20° | UNIV 100-264Vac | DALI | |
| | | | 4 in 1 Chip | | 30° | 60° | 36 36Vdc | DMX | |
| | | | RGB+W3000K | | 15x60° | | | CAS Casambi | |
| | | | RGBW4 | | | | | | |
| | | | 4 in 1 Chip | | | | | | |
| | | | RGB+W4000K | | | | | | |
| | | | RGBW7 | | | | | | |
| | | | 7 in 1 Chip | | | | | | |
| | | | RGBWCLA | | | | | | |

Reference example

VL-F16-C-DK-W60-75W-20°-UNIV-STD

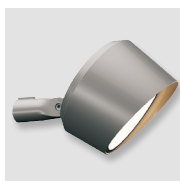
Variations



A
Base



B
Base 2



C
Pole Arm
D=45mm

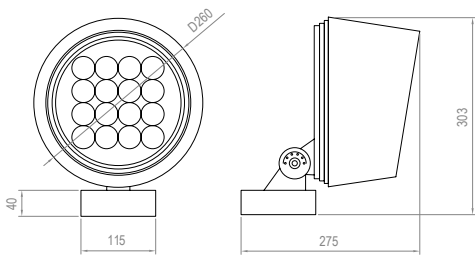


D
Pole mounted
D67-325mm

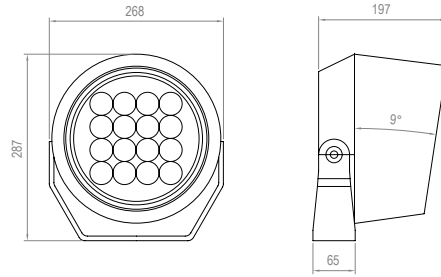


E
Stripe mounted

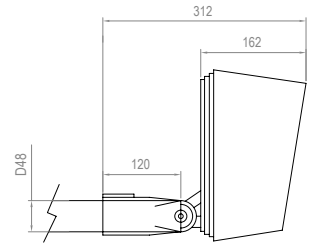
Dimensions



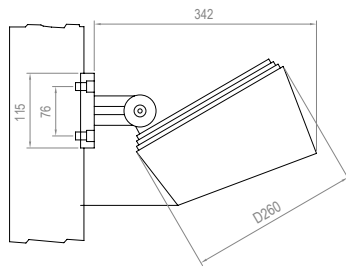
TYPE A



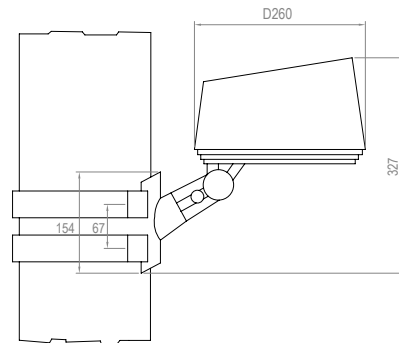
TYPE B



TYPE C



TYPE D

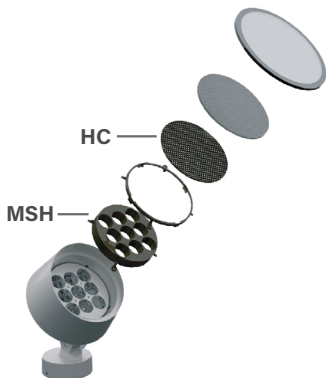


TYPE E

Accessories

| Code | Accessories |
|------|-------------|
|------|-------------|

VL-F16 **HC** Honeycomb Grid
MSH Mesh

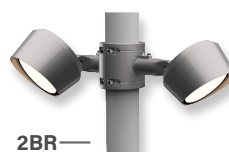
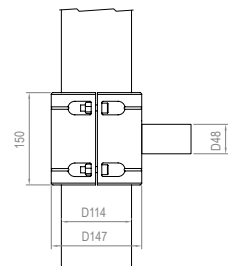


| Code | Accessories |
|------|-------------|
|------|-------------|

VL-F16 ***1BR** Bracket for 1 projector ** Must be used with Type C*
***2BR** Bracket for 2 projector ** Must be used with Type C*
***CBLX** Special length cable ** Instead of X, put length of cable needed*
Example: VL-F16-CBL-10m



1BR



2BR

