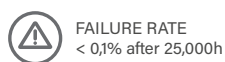


SHELL.1

iotaLAMP

www.iotalamp.com



CIRCULAR PROJECTORS
SHELL SERIES

References

Code	Type	Finish	Light Color	Power	Lense		Voltage	Driver
VL-SH1	A Base	LG Light grey	White					
	B Base 2	DK Dark grey	W24 2400K	10W	2,5°	8°	UNIV 100-264Vac	STD ON/OFF
	D Pole mounted	WH White	W27 2700K		15°	20°		24 24Vdc
	F Nut	BK Black	W30 3000K		30°	40°	RD Remote DALI	
		RAL Any RAL color	W40 4000K		60°	5x20°	RCAS Remote Casambi	
			W60 6000K		10x70°			
			White -COB Led module					
			W30 300K	16W	15°	24°	UNIV 100-264Vac	R010 Remote 0-10V
			W40 400K		36°	50°		RD Remote DALI
								RCAS Remote Casambi
			Single Color (SC)					
			R Red	10W	3°	8°	UNIV 100-264Vac	STD ON/OFF
			B Blue		12°	20°		24 24Vdc
			G Green		30°	40°	RD Remote DALI	
			A Amber		60°	5x20°	RCAS Remote Casambi	
			10x70°					
		RGBW						
		RGBW3	8W	15°	20°	24 24Vdc	RD Remote DALI	
		4 in 1 Chip RGB+W3000K		30°	60°		DMX	
		RGBW4		15x60°		RCAS Remote Casambi		
		4 in 1 Chip RGB+W4000K						

Reference example

VL-SH1-A-WH-W24-10W-60°-UNIV-STD

Variations



A
Base



B
Base 2

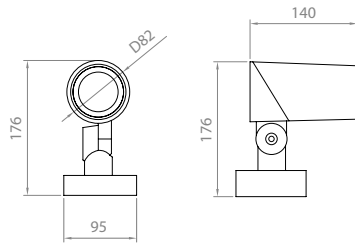


D
Pole mounted
D67-325mm

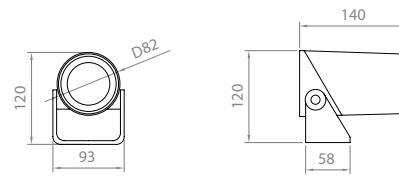


F
Nut (M10x1,5mm)

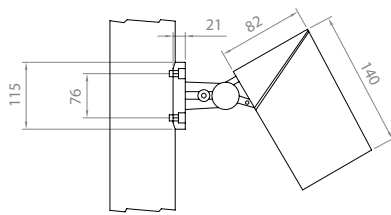
Dimensions



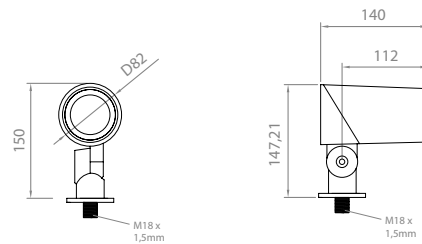
TYPE A



TYPE B



TYPE D



TYPE F

Accessories

Code	Accessories
------	-------------

VL-SH1
HC Honeycomb Grid
HO Hood
VS Visor



HC



HO



VS

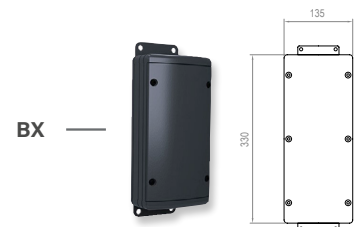
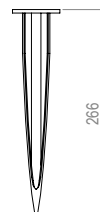
Code	Accessories
------	-------------

VL-SH1
***SPK** SPIKE
***1BR** Bracket for 1 projector
***CBLX** Special length cable

** Must be used with Type F*
** Must be used with Type C*
** Instead of X, put length of cable needed*
Example: VL-SH1-CBL-10m



SPK



BX

Accessories

Code	Description	Diameter	N° of projectors
VL-SH1	RNG RING	50 50cm	2P 2 projectors
		60 60cm	3P 3 projectors
		70 70cm	4P 4 projectors
		80 80cm	6P 6 projectors
			8P 8 projectors
	<i>Suggested diameter = diameter of tree trunk + 10cm/15cm</i>		<i>* projectors references must be order separetly</i>
			<i>** For 24Vdc projectors, ring can allocate 1 power supply for all projectors</i>

