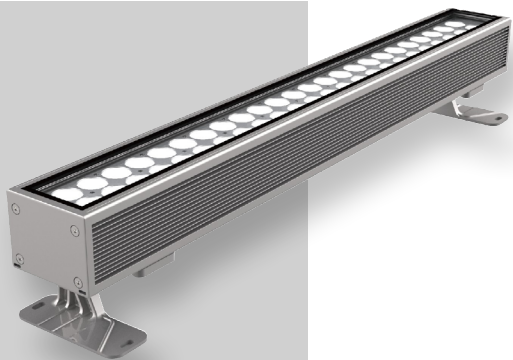


LINEAR-MAXLINE



IP66	IK09	CREE XP-G	RECYCLE
FAILURE RATE < 0,1% after 25,000h	LIFE TIME Tested over 50,000h	MIN -20°C MAX 55°C	CLASE I

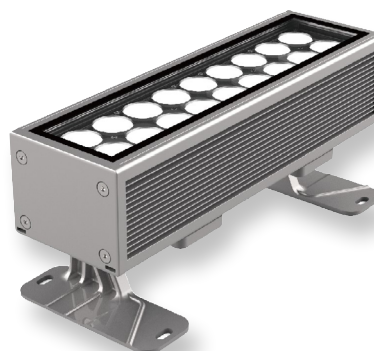
LINNERS
LINNEA SERIES

References

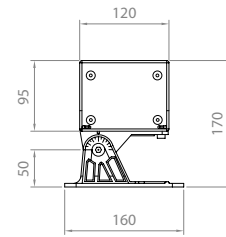
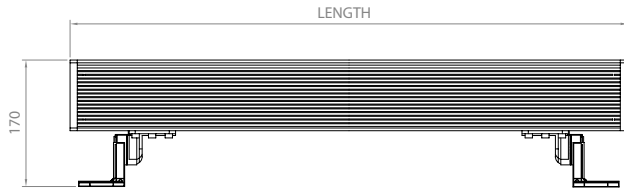
Code	Finish	Light Color	Length-Power	Lens		Voltage	Driver
VL-MXL	LG Light grey RAL Any RAL color	White					
		W24 2400K	300mm-80W	2,5°	6°	UNIV 100-264Vac	STD ON/OFF
	W27 2700K	400mm-120W	12°	20°	010 0-10V		
	W30 3000K	500mm-160W	30°	40°	DALI		
	W40 4000K	700mm-240W	60°	10x70°	CAS Casambi		
	W60 6000K	1000mm-300W	5x20°				
	Single Color (SC)						
	R Red	300mm - 80W	6°	12°	UNIV 100-264Vac	STD ON/OFF	
	B Blue	400mm - 120W	20°	30°		010 0-10V	
	G Green	500mm - 160W	40°	60°		DALI	
	A Amber	700mm - 240W	10x70°	5x20°		CAS Casambi	
		1000mm - 300W					
	RGBW						
	RGBW3	300mm-80W	15°	20°	UNIV 100-264Vac	DALI	
	4 in 1 Chip	400mm-120W	30°	60°		DMX	
RGB+W3000K	500mm-160W	10x30°	10x60°	CAS Casambi			
RGBW4	700mm-240W						
4 in 1 Chip RGB+W4000K	1000mm-300W						

Reference example

VL-MXL-W30-700mm-240W-20-UNIV-DALI



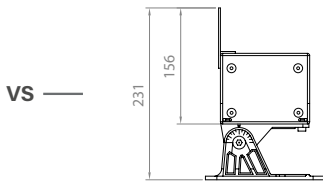
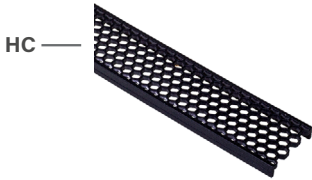
Dimensions



Accessories

Code	Accessories
------	-------------

VL-MXL **HC** Honeycomb Grid
VS Visor



Code	Accessories
------	-------------

VL-MXL **IO** In&out cable with connectors
***CBLX** Special length cable

** Instead of X, put length of cable needed
Example: VL-LN40-CBL-10m*