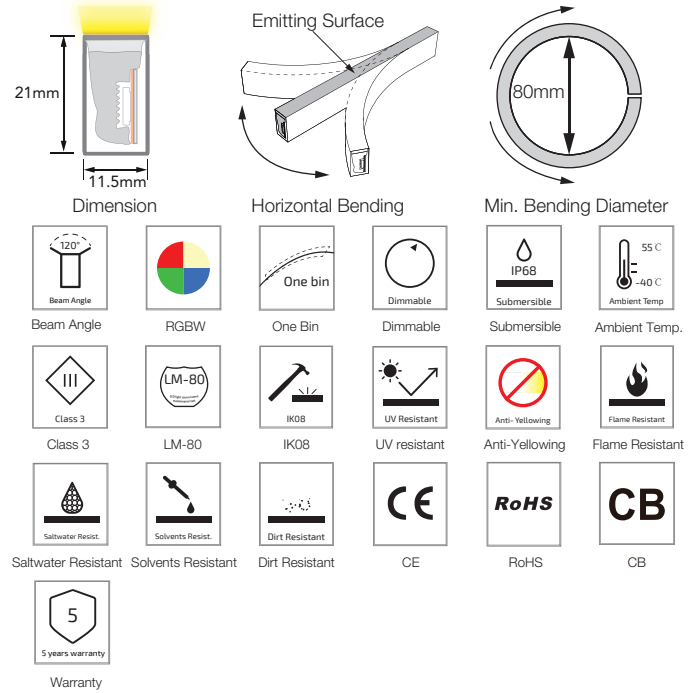
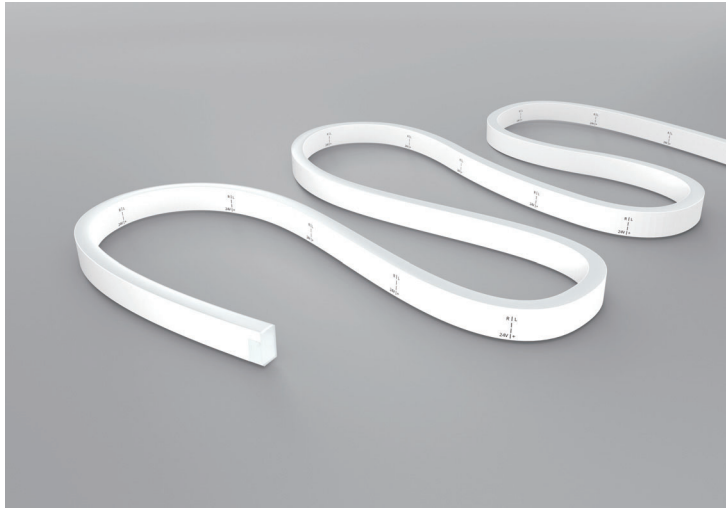


# SF15 Multi Color RGBW Silicone LED Linear Flex

SF15-24V-5050-84-RGBW

## Specification

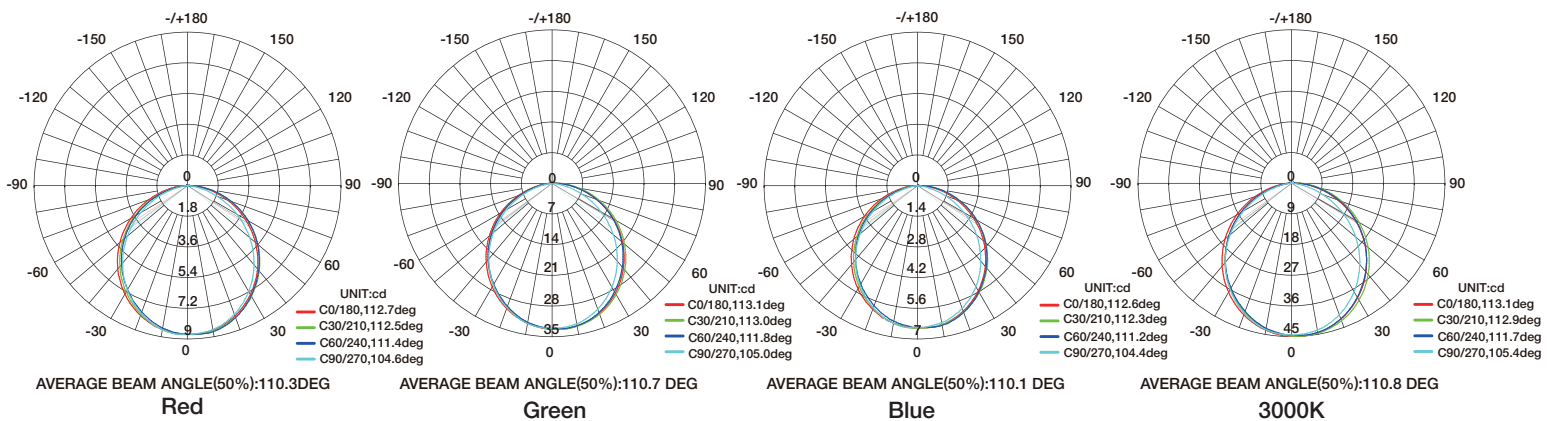


## Technical Parameters

Electrical	
Input Voltage	24V DC
Power Consumption	20W/m
Physical	
LED Count	84 LEDs/m
Cutting Unit	7 LEDs
Cutting Unit Length	83.3mm
Minimum Bend Diameter	80mm
Output	
LED Light	Epistar SMD LED 5050
Color	RGBW(2700K/3000K/4000K/5000K)
Max Run Length*	
Single Feed	7 M
Double Feed	14 M
Beam Angle	120°
Lumen Maintenance	70,000 Hours L70 @ 25°C 50,000 Hours L70 @ 50°C
Temperature Ranges	
Installation	0°C to 50°C
Operating	-40°C to 55°C
Dependability	
Warranty	5 Years Warranty
IP Rating	IP68 Wet location submersible <2m

Emitting Color	Lumen Output
Red	55lm/m
Green	125lm/m
Blue	40lm/m
RGBW	310lm/m
3000K	165lm/m

## Illuminance Distribution



# SF15 Multi Color RGBW Silicone LED Linear Flex

## Connection

